



SUB

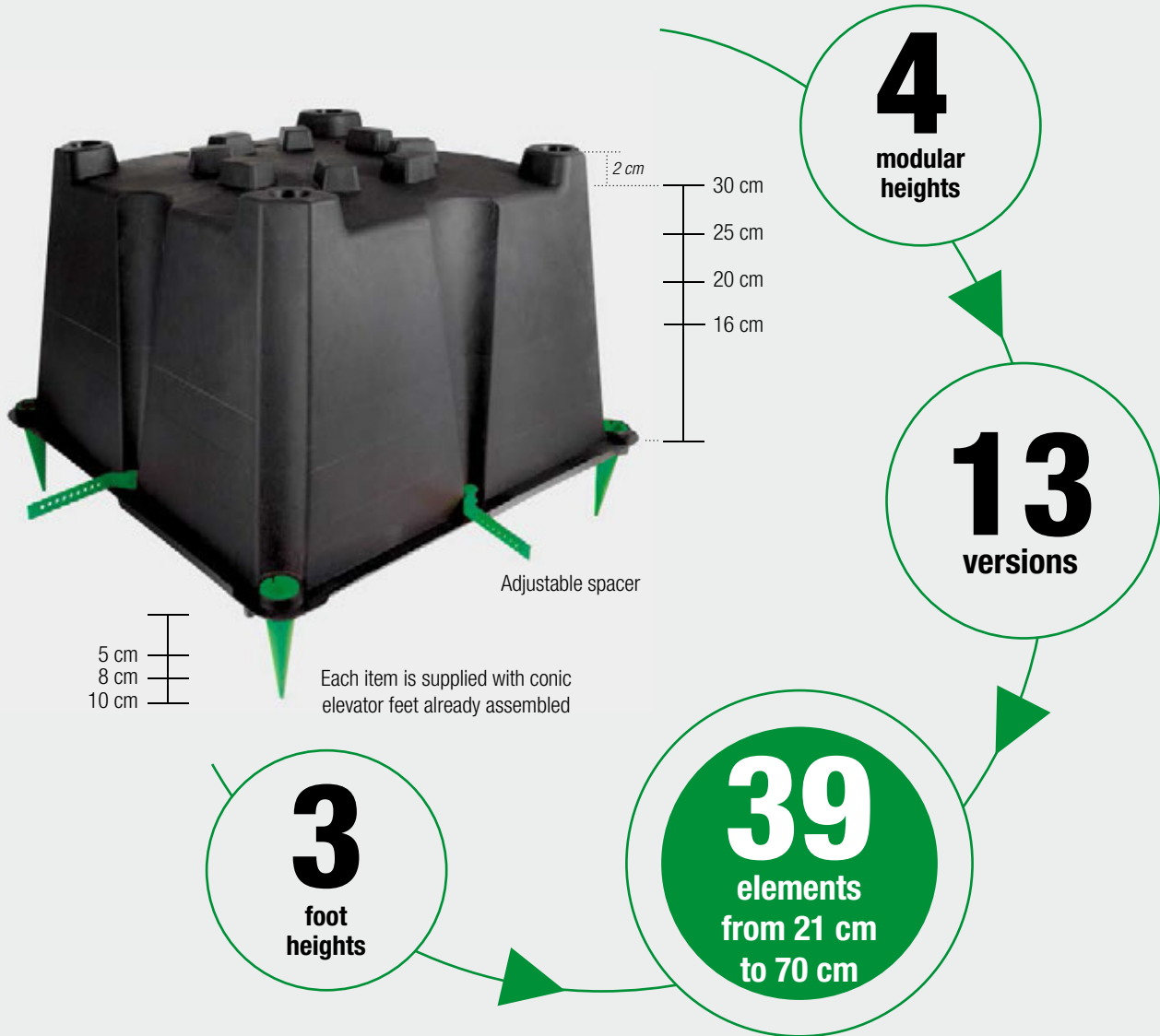
Modular formwork for the realization of bidirectional lightened floors

SUB

«SUB» is the innovative modular element in recycled plastic, used for the realization of bidirectional lightened floors. It replaces the lightening in bricks and polystyrene.

The formworks are available singles or doubles, the four versions are all modular to satisfy the different needs of heights. All the elements include feet and adjustable spacers.

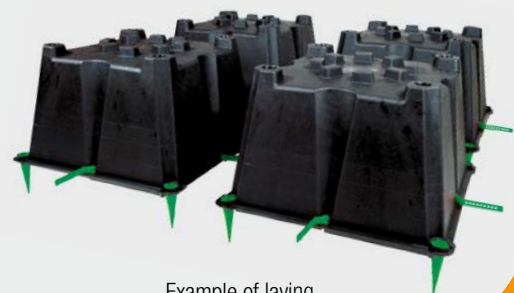
ITEM	BASE in CM	PACKAGING in CM	PIECES
SUB H16	52 x 52	110 x 110	400
SUB H20	52 x 52	110 x 110	360
SUB H25	52 x 52	110 x 110	360
SUB H30	52 x 52	110 x 110	320



Double element



Single element



Example of laying

CONSUMPTION LIST F

the calculations were made considering 5 cm of layer. If the thickness of the layer increases the consumption of the concrete increases

BEAM cm 10

LAYER cm 5 FOOT cm 5					
H floor	H sub	PIECE M ²	VOL. PIECE	VOL M ²	CONC. M ²
26	16	2,60	31	81	179
30	20	2,60	40	104	196
35	25	2,60	52	135	215
40	30	2,60	64	166	234
44	32 (16+16)	2,60	62	161	279
48	36 (20+16)	2,60	71	185	295
52	40 (20+20)	2,60	80	208	312
53	41 (25+16)	2,60	83	216	314
57	45 (25+20)	2,60	92	239	331
58	46 (30+16)	2,60	95	247	333
62	50 (30+20)	2,60	104	270	350
67	55 (30+25)	2,60	116	302	368
72	60 (30+30)	2,60	128	333	387

LAYER cm 5 FOOT cm 8					
H floor	H sub	PIECE M ²	VOL. PIECE	VOL M ²	CONC. M ²
29	16	2,60	31	81	209
33	20	2,60	40	104	226
38	25	2,60	52	135	245
43	30	2,60	64	166	264
47	32 (16+16)	2,60	62	161	309
51	36 (20+16)	2,60	71	185	325
55	40 (20+20)	2,60	80	208	342
56	41 (25+16)	2,60	83	216	344
60	45 (25+20)	2,60	92	239	361
61	46 (30+16)	2,60	95	247	363
65	50 (30+20)	2,60	104	270	380
70	55 (30+25)	2,60	116	302	398
75	60 (30+30)	2,60	128	333	417

LAYER cm 5 FOOT cm 10					
H floor	H sub	PIECE M ²	VOL. PIECE	VOL M ²	CONC. M ²
31	16	2,60	31	81	229
35	20	2,60	40	104	246
40	25	2,60	52	135	265
45	30	2,60	64	166	284
49	32 (16+16)	2,60	62	161	329
53	36 (20+16)	2,60	71	185	345
57	40 (20+20)	2,60	80	208	362
58	41 (25+16)	2,60	83	216	364
62	45 (25+20)	2,60	92	239	381
63	46 (30+16)	2,60	95	247	383
67	50 (30+20)	2,60	104	270	400
72	55 (30+25)	2,60	116	302	418
77	60 (30+30)	2,60	128	333	437

BEAM cm 12

LAYER cm 5 FOOT cm 5					
H floor	H sub	PIECE M ²	VOL. PIECE	VOL M ²	CONC. M ²
26	16	2,44	31	76	184
30	20	2,44	40	98	202
35	25	2,44	52	127	223
40	30	2,44	64	156	244
44	32 (16+16)	2,44	62	151	289
48	36 (20+16)	2,44	71	173	307
52	40 (20+20)	2,44	80	195	325
53	41 (25+16)	2,44	83	203	327
57	45 (25+20)	2,44	92	224	346
58	46 (30+16)	2,44	95	232	348
62	50 (30+20)	2,44	104	254	366
67	55 (30+25)	2,44	116	283	387
72	60 (30+30)	2,44	128	312	408

LAYER cm 5 FOOT cm 8					
H floor	H sub	PIECE M ²	VOL. PIECE	VOL M ²	CONC. M ²
29	16	2,44	31	76	214
33	20	2,44	40	98	232
38	25	2,44	52	127	253
43	30	2,44	64	156	274
47	32 (16+16)	2,44	62	151	319
51	36 (20+16)	2,44	71	173	337
55	40 (20+20)	2,44	80	195	355
56	41 (25+16)	2,44	83	203	357
60	45 (25+20)	2,44	92	224	376
61	46 (30+16)	2,44	95	232	378
65	50 (30+20)	2,44	104	254	396
70	55 (30+25)	2,44	116	283	417
75	60 (30+30)	2,44	128	312	438

LAYER cm 5 FOOT cm 10					
H floor	H sub	PIECE M ²	VOL. PIECE	VOL M ²	CONC. M ²
31	16	2,44	31	76	234
35	20	2,44	40	98	252
40	25	2,44	52	127	273
45	30	2,44	64	156	294
49	32 (16+16)	2,44	62	151	339
53	36 (20+16)	2,44	71	173	357
57	40 (20+20)	2,44	80	195	375
58	41 (25+16)	2,44	83	203	377
62	45 (25+20)	2,44	92	224	396
63	46 (30+16)	2,44	95	232	398
67	50 (30+20)	2,44	104	254	416
72	55 (30+25)	2,44	116	283	437
77	60 (30+30)	2,44	128	312	458

THE VOLUMES ARE EXPRESSED IN LITERS

FLOOR "SUB"



BEAM cm 14

LAYER cm 5 FOOT cm 5					
H floor	H sub	PIECE M ²	VOL. PIECE	VOL M ²	CONC. M ²
26	16	2,30	31	71	189
30	20	2,30	40	92	208
35	25	2,30	52	120	230
40	30	2,30	64	147	253
44	32 (16+16)	2,30	62	143	297
48	36 (20+16)	2,30	71	163	317
52	40 (20+20)	2,30	80	184	336
53	41 (25+16)	2,30	83	191	339
57	45 (25+20)	2,30	92	212	358
58	46 (30+16)	2,30	95	219	362
62	50 (30+20)	2,30	104	239	381
67	55 (30+25)	2,30	116	267	403
72	60 (30+30)	2,30	128	294	426

BEAM cm 16

LAYER cm 5 FOOT cm 5					
H floor	H sub	PIECE M ²	VOL. PIECE	VOL M ²	CONC. M ²
26	16	2,16	31	67	193
30	20	2,16	40	86	214
35	25	2,16	52	112	238
40	30	2,16	64	138	262
44	32 (16+16)	2,16	62	134	306
48	36 (20+16)	2,16	71	153	327
52	40 (20+20)	2,16	80	173	347
53	41 (25+16)	2,16	83	179	351
57	45 (25+20)	2,16	92	199	371
58	46 (30+16)	2,16	95	205	375
62	50 (30+20)	2,16	104	225	395
67	55 (30+25)	2,16	116	251	419
72	60 (30+30)	2,16	128	276	444

LAYER cm 5 FOOT cm 8

H floor	H sub	PIECE M ²	VOL. PIECE	VOL M ²	CONC. M ²
29	16	2,30	31	71	219
33	20	2,30	40	92	238
38	25	2,30	52	120	260
43	30	2,30	64	147	283
47	32 (16+16)	2,30	62	143	327
51	36 (20+16)	2,30	71	163	347
55	40 (20+20)	2,30	80	184	366
56	41 (25+16)	2,30	83	191	369
60	45 (25+20)	2,30	92	212	388
61	46 (30+16)	2,30	95	219	392
65	50 (30+20)	2,30	104	239	411
70	55 (30+25)	2,30	116	267	433
75	60 (30+30)	2,30	128	294	456

LAYER cm 5 FOOT cm 8

H floor	H sub	PIECE M ²	VOL. PIECE	VOL M ²	CONC. M ²
29	16	2,16	31	67	223
33	20	2,16	40	86	244
38	25	2,16	52	112	268
43	30	2,16	64	138	292
47	32 (16+16)	2,16	62	134	336
51	36 (20+16)	2,16	71	153	357
55	40 (20+20)	2,16	80	173	377
56	41 (25+16)	2,16	83	179	381
60	45 (25+20)	2,16	92	199	401
61	46 (30+16)	2,16	95	205	405
65	50 (30+20)	2,16	104	225	425
70	55 (30+25)	2,16	116	251	449
75	60 (30+30)	2,16	128	276	474

LAYER cm 5 FOOT cm 10

H floor	H sub	PIECE M ²	VOL. PIECE	VOL M ²	CONC. M ²
31	16	2,30	31	71	239
35	20	2,30	40	92	258
40	25	2,30	52	120	280
45	30	2,30	64	147	303
49	32 (16+16)	2,30	62	143	347
53	36 (20+16)	2,30	71	163	367
57	40 (20+20)	2,30	80	184	386
58	41 (25+16)	2,30	83	191	389
62	45 (25+20)	2,30	92	212	408
63	46 (30+16)	2,30	95	219	412
67	50 (30+20)	2,30	104	239	431
72	55 (30+25)	2,30	116	267	453
77	60 (30+30)	2,30	128	294	476

LAYER cm 5 FOOT cm 10

H floor	H sub	PIECE M ²	VOL. PIECE	VOL M ²	CONC. M ²
31	16	2,16	31	67	243
35	20	2,16	40	86	264
40	25	2,16	52	112	288
45	30	2,16	64	138	312
49	32 (16+16)	2,16	62	134	356
53	36 (20+16)	2,16	71	153	377
57	40 (20+20)	2,16	80	173	397
58	41 (25+16)	2,16	83	179	401
62	45 (25+20)	2,16	92	199	421
63	46 (30+16)	2,16	95	205	425
67	50 (30+20)	2,16	104	225	445
72	55 (30+25)	2,16	116	251	469
77	60 (30+30)	2,16	128	276	494



ADVANTAGES

REDUCTION OF THE THICKNESS OF THE FLOOR

Saving of concrete and scaffolding steel

Lightening of the floor until 40%

Reduction of the number of pillar

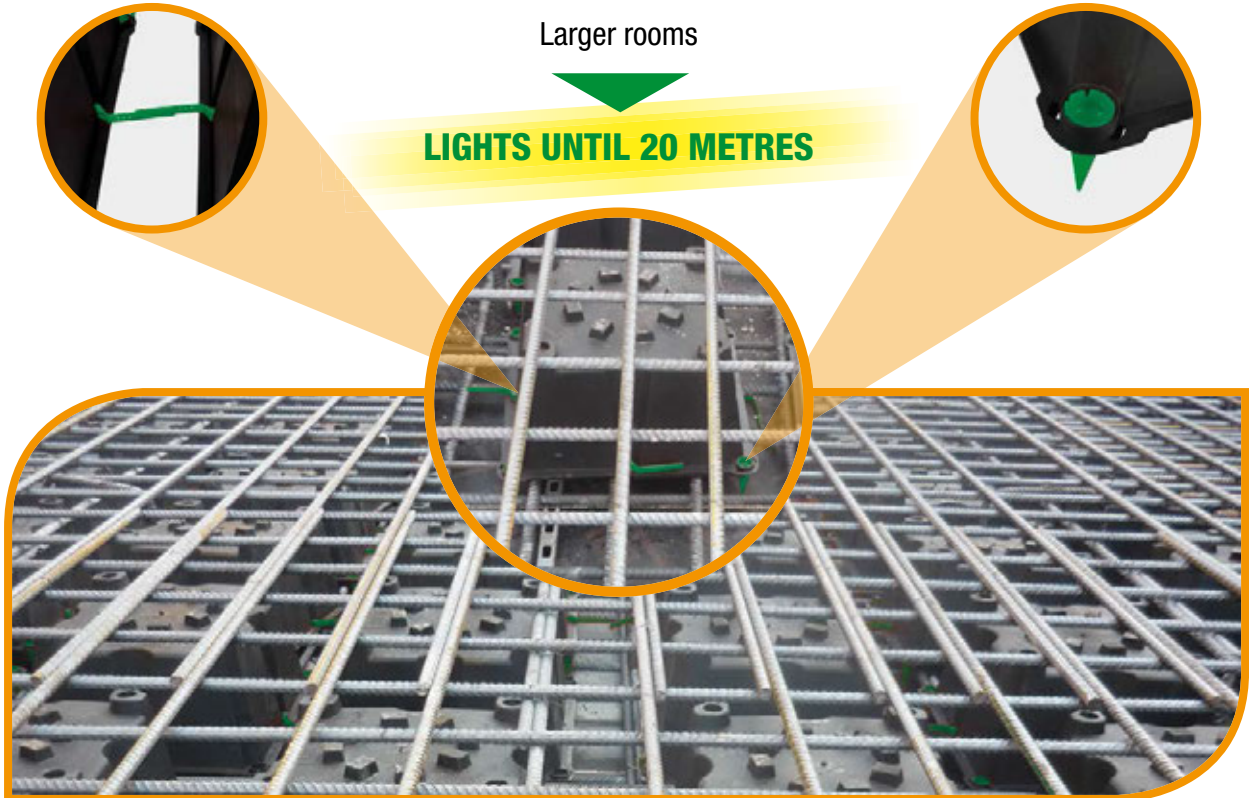
Absence of beams between the pillars

Larger rooms

REDUCTION
OF THE SEISMIC MASS

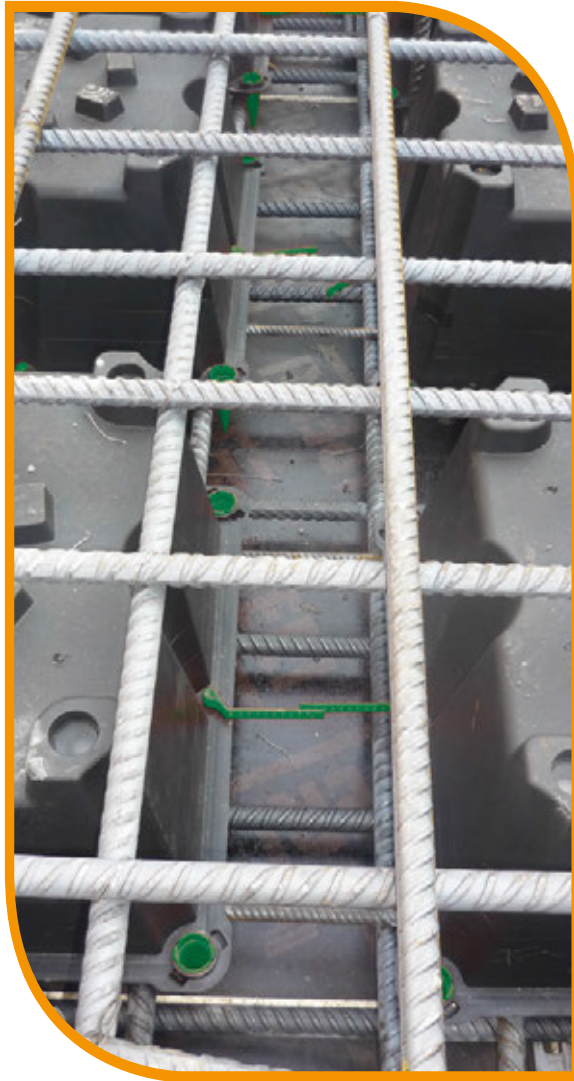
INCREASE OF THE
NUMBER OF FLOORS

LIGHTS UNTIL 20 METRES



DESCRIPTION OF SPECIFICATION

Execution of the floor with reinforced concrete, lightened by element like SUB with bidirectional capacity, to cast on site on a suitable subtain horizontal framework. The total floor thickness is cm _____ lightened according to the project with element in recycled plastic like SUB, dimension cm 52 x 52 and height of cm _____, with the elevator conic foot of cm _____ turned down. Supply of steel scaffolding with bidirectional mesh of suitable diameter and step to the project solicitations. It's included the supply and the installation of the elements SUB provided with relative spacer, for the realization of orthogonal beams between the lightenings according to the predetermined thickness and ensuring the perfect geometry and leak during the concrete casting phase.



24050 Mornico Al Serio (BG) - I - Via Fornace
Tel. +39 035 4490440 - Fax +39 035 4490752

www.projectforbuilding.com - info@projectforbuilding.com

